



PHIPPS INTERNATIONAL
FACTORY DIRECT INTERIORS

DESIGN TO BUILD

Phipps & Co. is a design and manufacturing firm specializing in custom interior finishes, furniture, fixtures and architectural millwork for the residential, commercial and hospitality industry.

Our mission is to open the gate of world class manufacturing. From Europe, Asia , North and South America to around the world, we hand pick our factories to satisfy the unique demands of our projects and clientele.

We pride ourselves in being your partner from inception to creation.



70 VESTRY STREET

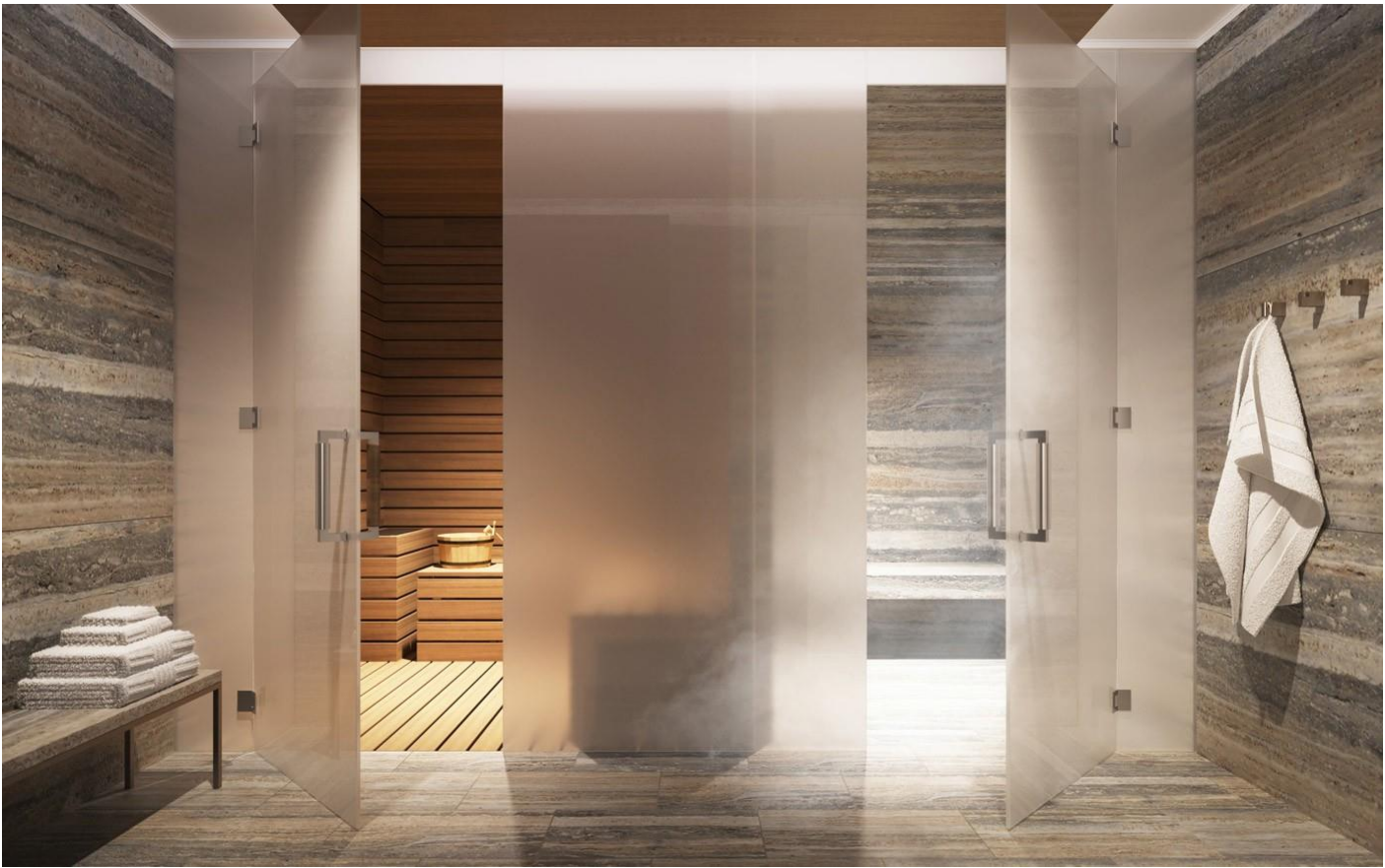
NEW YORK, NEW YORK

70 Vestry is a thirteen-story residential building in the Tribeca neighborhood of Manhattan. Waterfront condominium homes with expansive Hudson River views. Designed by Robert A. M. Stern Architects.

PROJECT ENGAGEMENT

All Stones, Glass Mosaic, Shower Enclosure, Wood Flooring.
Tiles for the Amenity Areas.

Developer: RELATED COMPANIES





NOMAD 30 E 31

NEW YORK , NEW YORK

Residences at 30 E 31 feature expansive floor-to-ceiling windows allowing for abundant natural light and beautiful views of Midtown, the Empire State Building, and the southern skyline, emphasizing the historic architecture surrounding Madison Square Park. The thoughtfully appointed interiors offer rich finishes, 7-inch-wide plank European oak flooring, custom hardware, & architectural millwork throughout.

PROJECT ENGAGEMENT

All Stones, Countertops, Tiles, Slabs, Medicine Cabinet.

Developer: EKSTEIN DEVELOPMENT





MARRIOTT FULLERTON

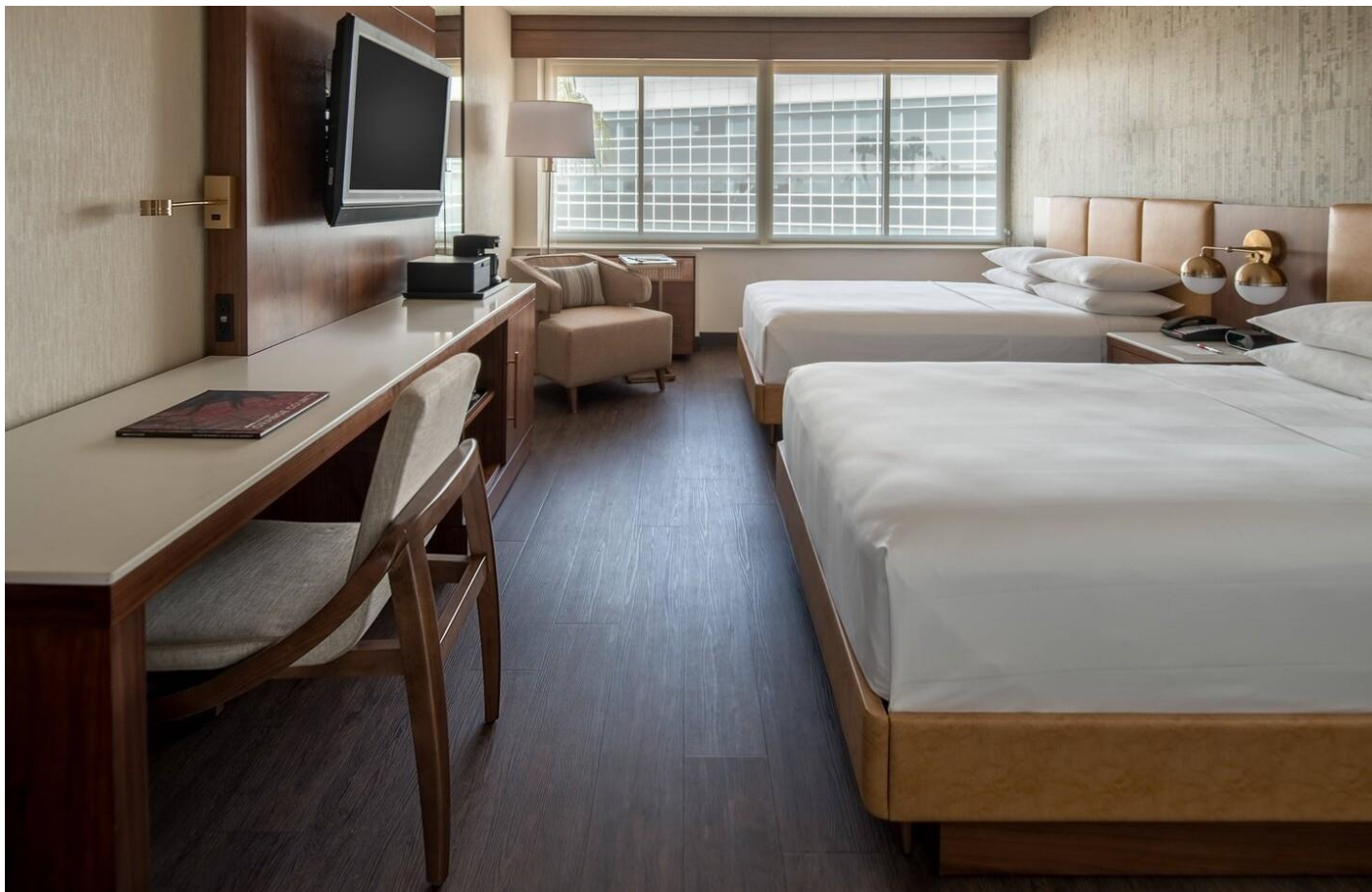
FULLERTON, CALIFORNIA

Elevate your travel experience at Fullerton Marriott at California. Decorated in neutral tones, the understated rooms and suites offer free Wi-Fi, flat-screen TVs, minibridges, and tea and coffeemakers. This unassuming hotel is a mile from Fullerton Arboretum, 10 miles from Disneyland Park and 5 miles from The Richard Nixon Library & Museum.

PROJECT ENGAGEMENT

All Guestroom Furniture, Quartz Countertops, Jackpicks & LED Lights.

Developer: HERE





HENDRICKS HOTEL

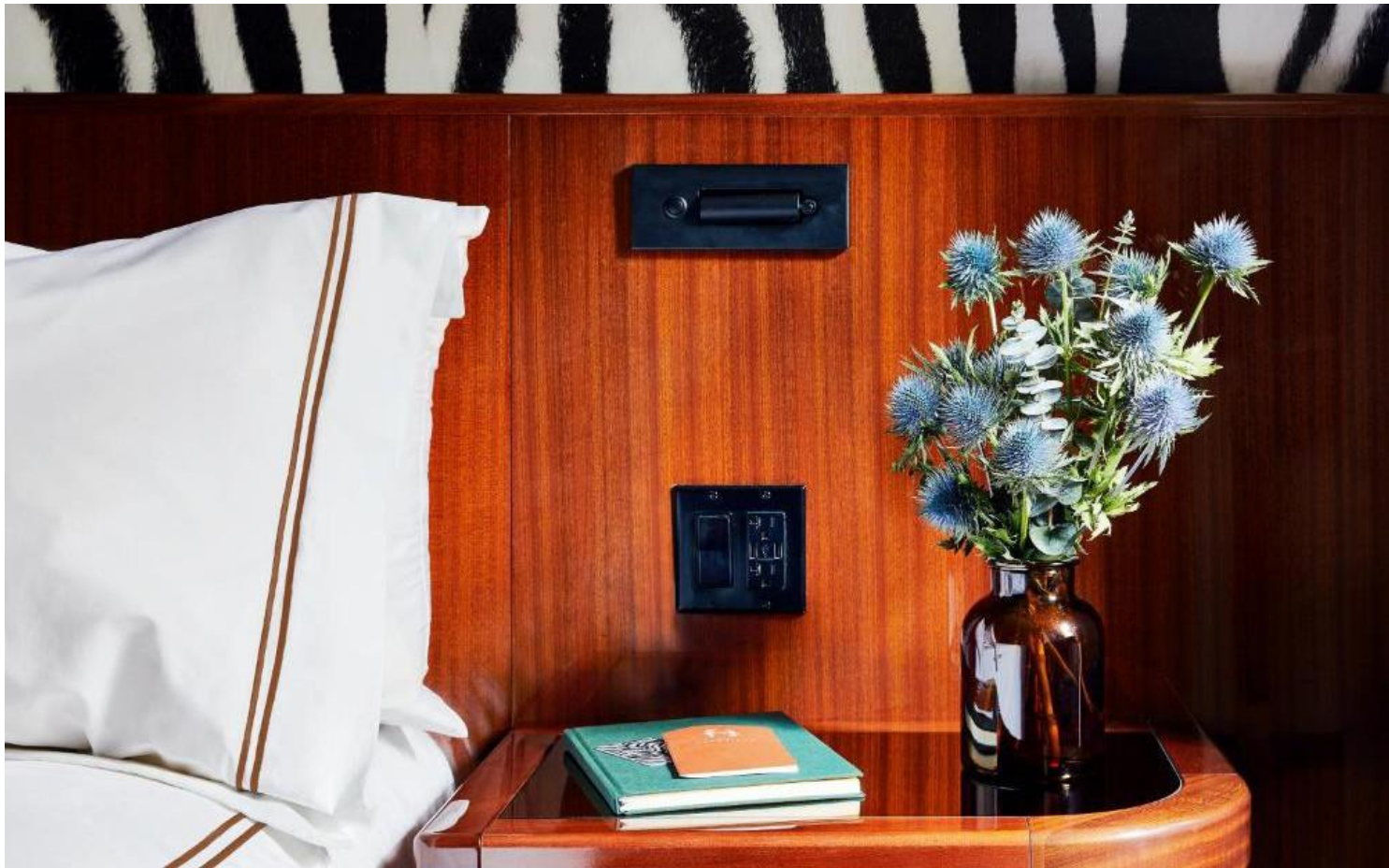
NEW YORK , NEW YORK

With stylish interiors designed by Marchello Pozzi, floor-to-ceiling mahogany and Italian millwork, and bathrooms fitted with premium Waterworks fixtures and frosted glass, you'll know the moment you arrive that Hotel Hendricks stands a world apart from other Midtown Manhattan hotels.

PROJECT ENGAGEMENT

Bathroom Accessories, Plumbing Fixtures, Shower Enclosures, Vanities, Sink, Countertops, and Headboard Reading Lights

Developer: FORTUNA REALTY





HUDSON YARDS

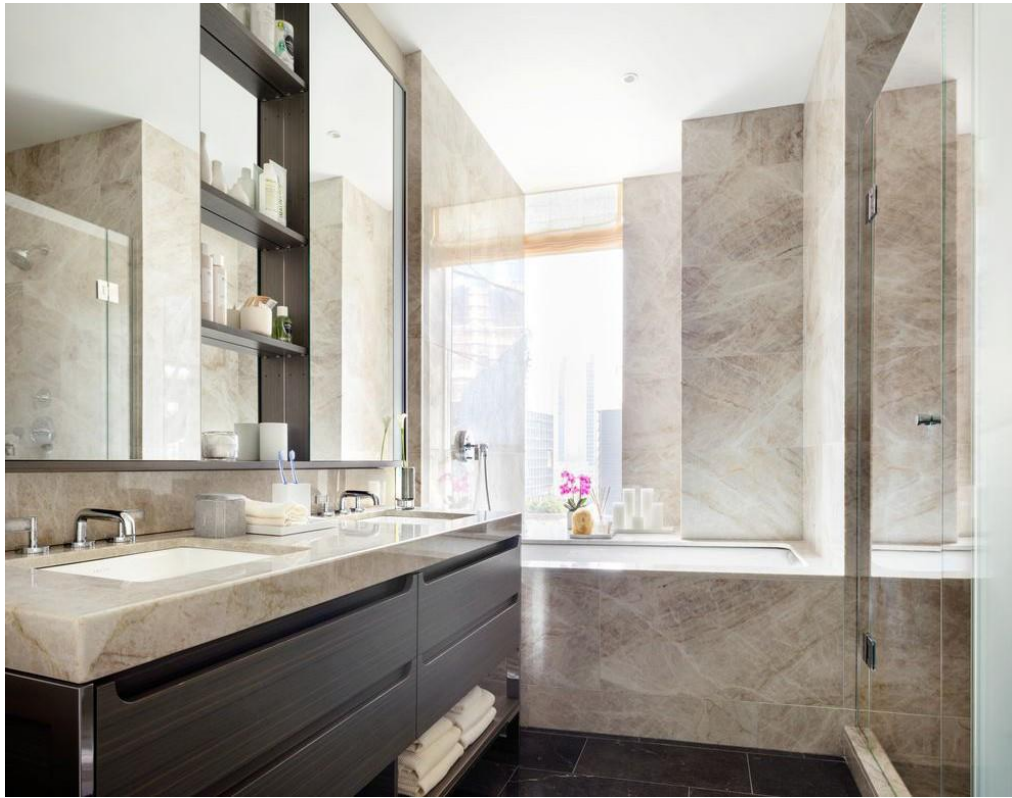
NEW YORK, NEW YORK

520 W. 30TH ST. | LUXURY RENTAL One Hudson Yards is a stunning new collection of one-to three bedroom residences that surpass the expectations of the most discerning residents, marrying an owner-like experience with the flexibility that renting offers. Spaces in this contemporary architectural icon feature 10-foot-high ceilings, Miele appliances, bespoke finishes and unparalleled views of Hudson Yards, the Hudson River, West Chelsea and Downtown. The shining list of amenities includes an 82-foot-long lap pool and spa, a bowling alley, basketball court, children's playroom, penthouse terrace and lounge, valet in-building parking and exclusive access to Hudson Yards benefits and services.

PROJECT ENGAGEMENT

All stones including counter-tops, tiles and slabs as well as glass mosaic for the project. Wood flooring for the party room.

Developer: RELATED COMPANIES





THE SUTTON

NEW YORK, NEW YORK

The Sutton Condominium is a portrait of a neighborhood designed inside and out by Incorporated Architecture & Design (INC) and stands out as a warm, richly crafted addition to a new collection of modern designer residential buildings going up in Midtown East. With an emphasis on old world quality, including highly crafted building materials and a tactile interior palette, “The Sutton Condominium is a building more crafted than designed with a capital D”. The project is deeply rooted in the history, culture and luxury tradition of the Sutton Place neighborhood.

PROJECT ENGAGEMENT

Stone, Custom Made Marble Harringbone, Slabs and Countertops.

Developer: Toll Brothers





182 W. 82nd St.

NEW YORK, NEW YORK

182 West 82nd Street consists of eleven bespoke apartments, beautifully and thoughtfully redesigned into loft-like residences tailored for chic, contemporary living. The sweeping floor-through apartments, including two townhouse triplex residences and two penthouses, are carefully crafted with new interiors and rich finishes and details; a perfect marriage between pre-war charm and the epitome of modern construction and new systems.

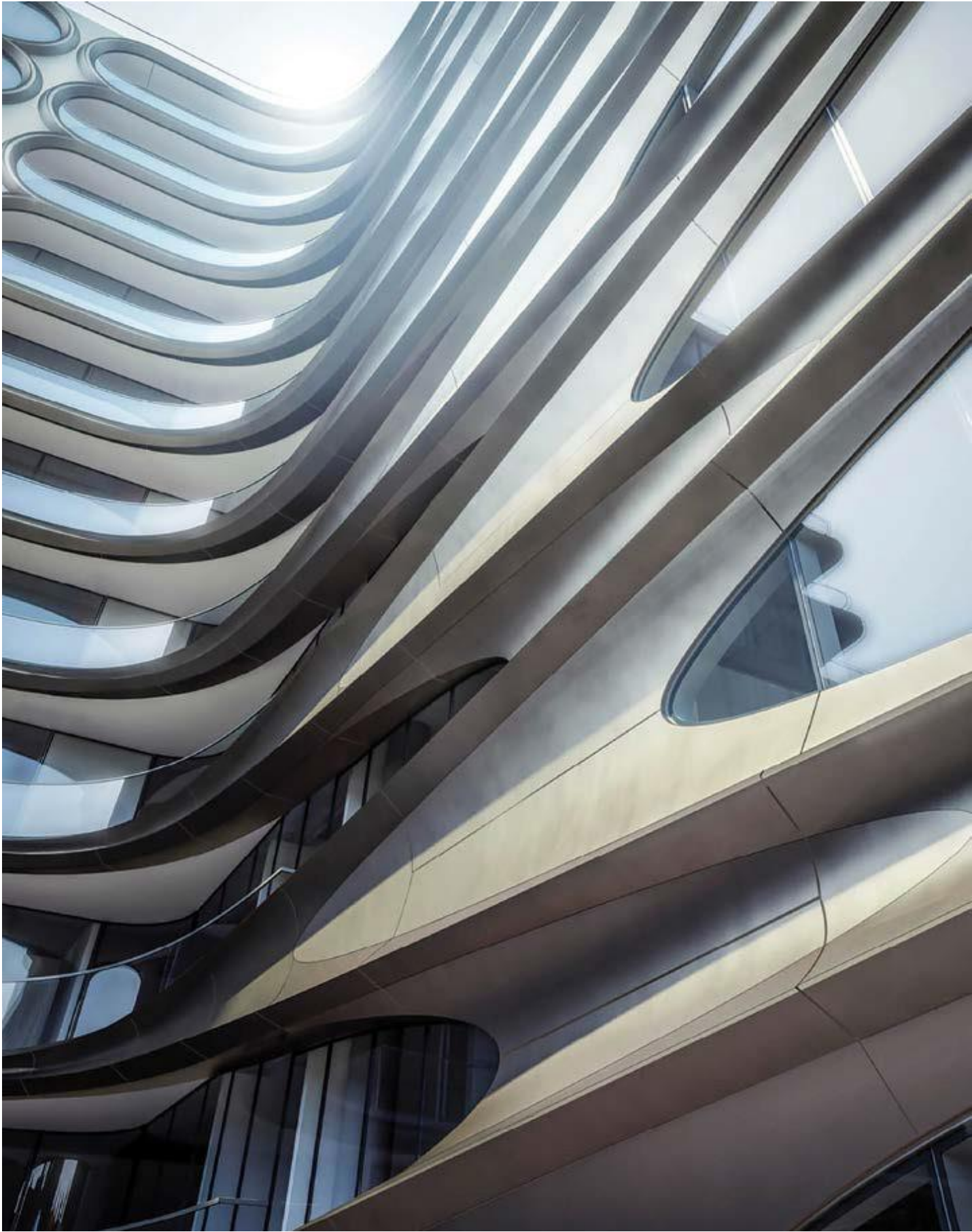
Steps away from some of the city's finest restaurants, shops cultural institutions. Individual apartments boast high ceilings and oversized windows state-of-the-art kitchens with stainless steel appliances; custom cabinetry and countertops with beautiful wood-flooring in a herringbone pattern and a Private elevator with key-fob entrance into each residence. This boutique luxury building is a neighbor to Central Park and some of the City's finest restaurants, shops and cultural institutions. 182 West 82nd Street is a unique property and is one of the most sought after residences in this City-protected, historic area.

PROJECT ENGAGEMENT

Custom Design and Manufacturing of Medicine Cabinets and Vanities.

Developer: The Naftali Group





520 West 28th St

NEW YORK, NEW YORK

The collection of residences at 520 West 28th represents Zaha Hadid's vision for modern living. Working within her distinctive architectural language, she applies a powerful elegance and detail to the interiors, focusing on nuances that reflect the overall experience of the building. The 39 generous loft-like residences are individually crafted, each with the artist's signature mark woven into the design. Residents become immersed in Hadid's fluid world—a thoughtful collection of living spaces. The interiors integrate seamlessly into the sculpted nature of the building's exterior, creating one monumental piece of art.

PROJECT ENGAGEMENT

Custom Design and Manufacturing of Flooring.

Developer: Related Companies





HUGO

NEW YORK, NEW YORK

Hotel Hugo embodies the contemporary luxury and bohemian chic that captivates visitors and residents of trendy Lower Manhattan.

Hotel Hugo pays tribute to the storied history of Lower Manhattan and the area's enduring art-meets-industrial edge. A new hotel in Soho, this sophisticated newcomer delights with its easy mix of Marcello Pozzi architecture, thoughtful amenities and modern Italian cuisine.

PROJECT ENGAGEMENT

Flooring, Vanities, Shower Enclosures, Stainless Steel Under-Mount Sinks, Bathroom Accessories,

Developer: Fortuna Realty





THE LUDLOW

NEW YORK, NEW YORK

Set in the Lower East Side, this chic boutique hotel is a 3-minute walk from the subway, 1 mile from Washington Square Park and 2 miles from the Empire State Building. Bright, modern rooms feature floor-to-ceiling windows and bathrooms offer soaking tubs and/or rainfall showers. Some rooms add Nespresso machines and sitting areas, plus city views and/or terraces or balconies; While the penthouse comes with a kitchen, dining and living area. There's a trendy French bistro, a lobby bar and a garden patio.

PROJECT ENGAGEMENT

Furniture and Case Goods, Ceramic Stools, Tile, Marble Vanity tops, Saddles, Mosaic and Tub Decks, Basins, Lighting, Vanities, Plumbing Fixtures and Bathroom Accessories as well as Decorative items.

Developer: BD Hotels





THE DEAN

PROVIDENCE, RHODE ISLAND

Built in 1912, this hip boutique hotel in the Downcity Arts District is a 2-minute walk from the Rhode Island Convention Center, a mile from the Rhode Island School of Design Museum and 4 miles from Roger Williams Park. Reliving Providence's bold history and culture, the Dean Hotel exudes masculine styling and easy elegance, teaming with subtle collegiate references, modernist & contemporary designs. Centrally located in downtown Providence the Dean not only offers a great place to start your night, but a fantastic way to end it.

PROJECT ENGAGEMENT

Stone, Mosaic Tile, Brass Mirrors, Bathroom Accessories.

Developer: ASH NYC





WYNDHAM HOTEL

REGO PARK, NEW YORK

A short cab ride from Manhattan and minutes from La Guardia airport, the Wyndham Garden hotel in Rego Park, is the perfect stop for anyone in town on business or someone looking to experience the big city on a quick layover. Wyndham Garden has the same comforts you would expect in a Wyndham and more.

PROJECT ENGAGEMENT

Design and Development.

Developer: 9277QB





THE TIME

NYACK, NEW YORK

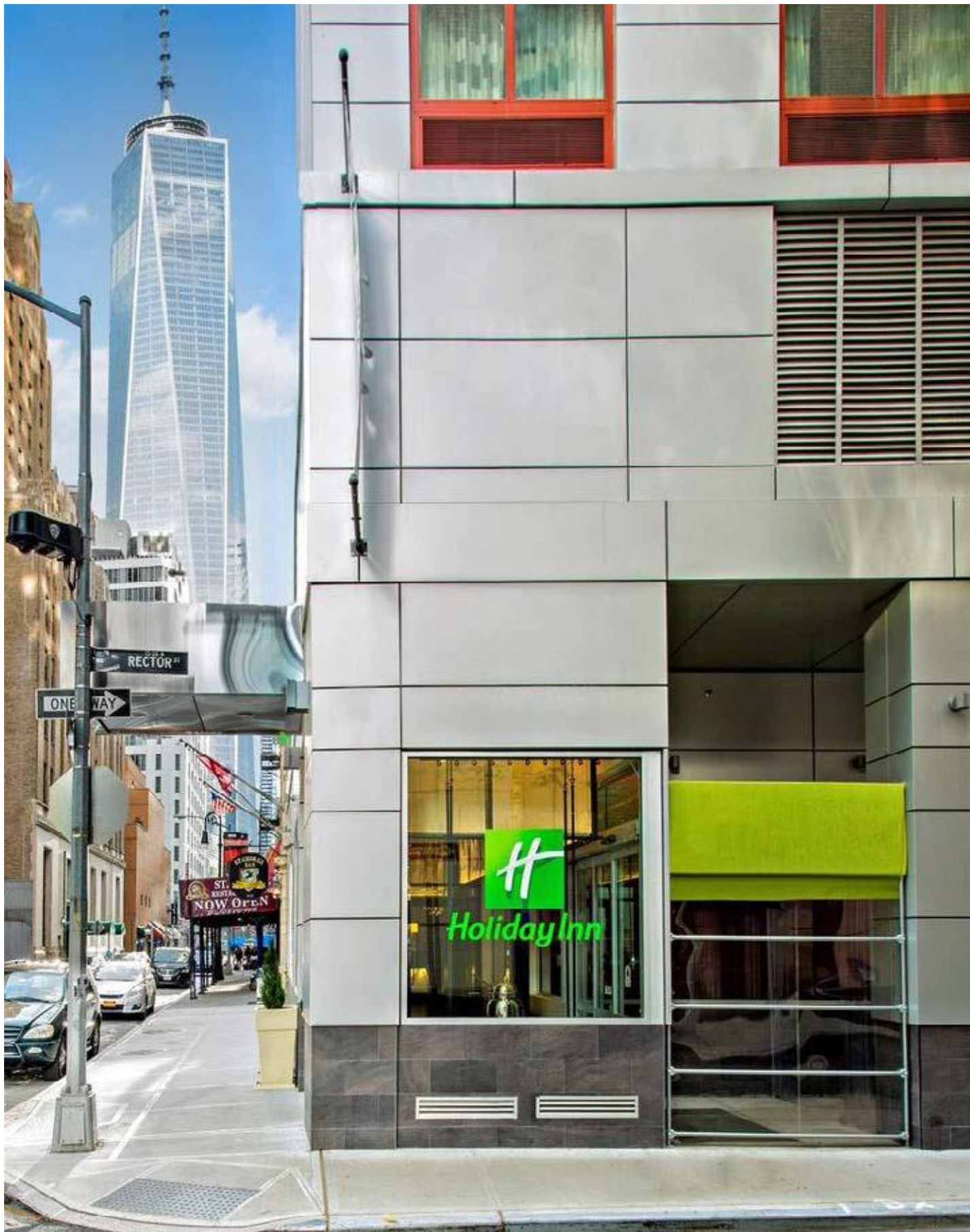
Just off Interstate 287, this trendy, upscale hotel in a former factory is a 15-minute walk from the Hudson riverfront and 2 miles from Mountainview Nature Park. Industrial-chic rooms with wood floors, ritzy decor, and sitting areas feature complimentary Wi-Fi, flat-screen TVs, minifridges and Keurig coffeemakers. Upgraded rooms have river-view balconies and Suites add living rooms with sofas. Room service is also available; While parking and a local shuttle service are free. Other amenities include a polished grill-style restaurant and a hip rooftop bar and lounge. There's also an outdoor pool, a 24/7 exercise room, and a terrace with a fire pit.

PROJECT ENGAGEMENT

Furniture and Case Goods, Outdoor Furniture, Stone, Tile, Sinks, Mirrors, Vanities, Basins, Jackpack, LED Lights, Bathroom Accessories, Glass.

Developer: WY Management





HOLIDAY INN

MANHATTAN, NEW YORK

Located in the Financial district of New York city, The Holiday Inn Manhattan is a contemporary hotel with every amenity that you've come to know and love in a modern Holiday Inn hotel. With each of its 492 rooms including a magnificent view of the statue of liberty and the Manhattan skyline, combined with its central location to many of New York's major sites and attractions; this is the perfect hotel for first time visitors of New York.

PROJECT ENGAGEMENT

Stone, Tiles, Mirrors, Bathroom Accessories.

Developer: Goldstein Associates PLLC





THE MARLTON

NEW YORK, NEW YORK

This swanky, upscale hotel in a historic Greenwich Village building dates from 1900 and once hosted famous cultural figures. It's located 2 blocks from Washington Square Park and 4 blocks from the subway. The cozy, refined rooms include stylish designer furniture, wood floors, flat-screen TVs and free Wi-Fi, along with minibars and marble bathrooms. The penthouse suite adds a separate living area and a terrace. Amenities consist of an eclectic Mediterranean restaurant, a hip cocktail den and a coffee bar.

PROJECT ENGAGEMENT

Case Goods and Millwork, Brass and Marble Nightstands, Art-Frames, Decorative Lighting, Brass Fittings, Under-mount Sinks, Vanities, Bathroom Accessories.

Developer: BD Hotels





THE GATSBY

NEW YORK, NEW YORK

In the city that never sleeps, Gatsby Hotel is truly your home away from home providing you with cozy accommodations and friendly service while you revel in the fascinating city that is NYC. Gatsby Hotel is nestled in between the energetic and edgy Lower East Side/East Village, and the fashionable Nolita/SoHo districts; providing a central location for all those that want to stay in a lively neighborhood full of art, culture and trendy boutiques, but also be walking distance to major attractions such as Little Italy, Chinatown and the shopping paradise that encompasses Broadway in SoHo.

PROJECT ENGAGEMENT

Design, Development and Build.
Flooring, Stone, Tile, Case Goods and Furniture, Millwork, Shower Enclosures, LED Mirrors, Vanities, Medicine Cabinets, Lighting, Bathroom Fixtures and Accessories.

Developer: J&N Realty





GURNEY'S

MONTAUK, LONG ISLAND

Situated on Montauk's most pristine stretch of oceanfront real estate, Gurney's is a Hamptons icon and the only year-round resort in Montauk. Providing guests with direct access to a 2,000-foot private sand beach; Gurney's features 146 rooms, suites, and beachfront cottages, all delivering dramatic ocean views. With five unique dining and drinking venues, Gurney's presents an array of food and beverage options, from elegant seasonal cuisine to casual fare to craft cocktails. Gurney's also offers over 7,000 square feet of meeting and banquet space, for hosting a wide range of business and social events. Our acclaimed spa is renowned for its healing treatments and ocean-fed seawater pool; the only pool of its kind in North America. All the venues at Gurney's enjoy spectacular views of the Atlantic, but none more so than The Beach Club, which provides the only beachfront food and beverage service experience in the Hamptons.

PROJECT ENGAGEMENT

Flooring, Stone, Tile, Countertops, Case Goods and Furniture, Millwork, Decorative Lighting, Outdoor Furniture,

Developer: Metrovest





TANTALO HOTEL

PANAMA CITY

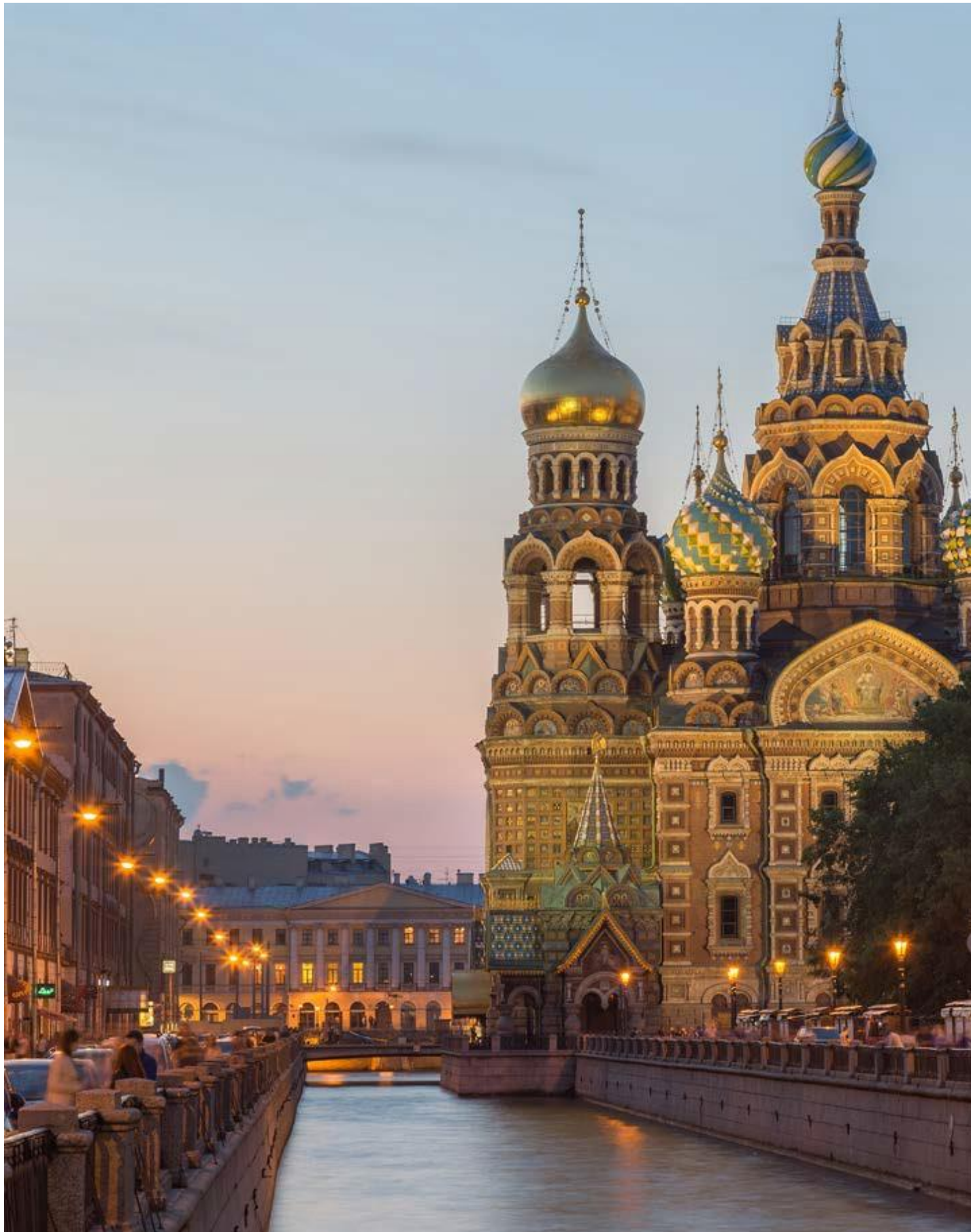
Casco Viejo's Premier Boutique Hotel and Rooftop Bar merges art, exceptional service and unique programming to stimulate the senses. Tantalo Hotel opened in 2012 and continues to pioneer new standards for hospitality, dining, nightlife and community revitalization in Casco Viejo; Panama City's UNESCO World Heritage District. By marrying a focus on art, unrivaled service and unconventional programming, our sustainable boutique hotel draws crowds from all over the world. Tantalo Hotel & Roofbar is located in the historic Casco Viejo district, Panama City's cobblestone center, brimming with colonial-era landmarks and bougainvillea-filled plazas lined with cafes and bars. Centrally located, many of Panama City's attractions are just outside our doors. Cathedral Square is just a 2 minute walk. Panama Canal is a 15 minute drive away. Tocumen International Airport is a 45 minute drive – with airport shuttle services available for an extra charge.

PROJECT ENGAGEMENT

Case Goods and Furniture, Millwork, Stone, Countertops, Faucets, Mirrors, Shower Glass, Vanities, Sinks.

Developer: Blesso Properties





BELMOND GRAND

ST. PETERSBURG, RUSSIA

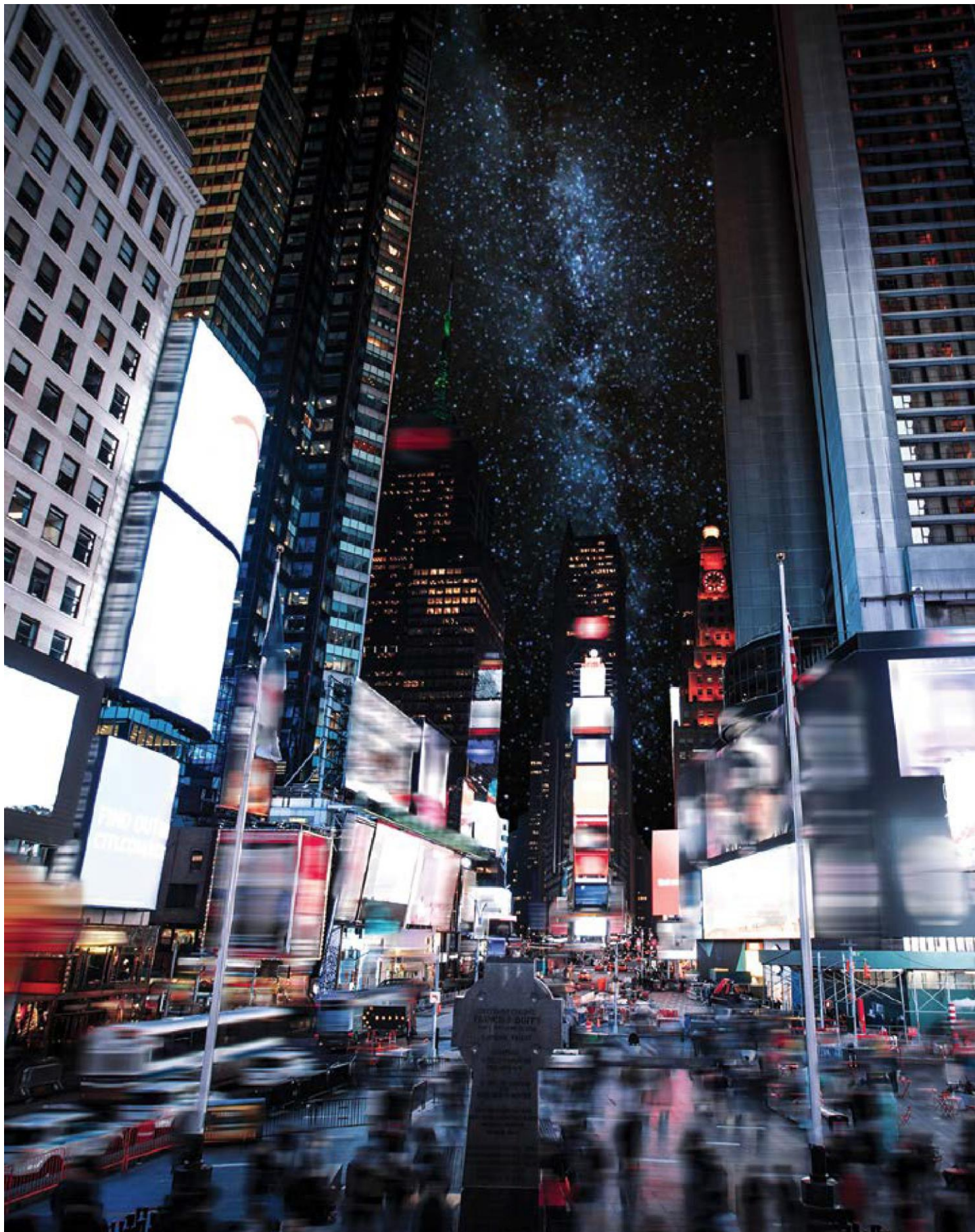
A cultural and culinary landmark, the hotel has played a central role in the life of the city for 140 years. A truly iconic building, it stands on Nevsky Prospekt among the city's great architectural treasures—renowned for its impressive façade and decorative interiors. Positioned adjacent to Arts Square, it is one of the most glamorous hotels in St Petersburg, Russia. Belmond Grand Hotel Europe has strong associations with the worlds of theatre, music and dance. A stay here shows you the true spirit of the country, especially during the White Days of winter; when snow lies outside and a warm welcome awaits within.

PROJECT ENGAGEMENT

Custom Design And Manufacturing of Furniture and Case Goods.

Developer: Belmond LTD





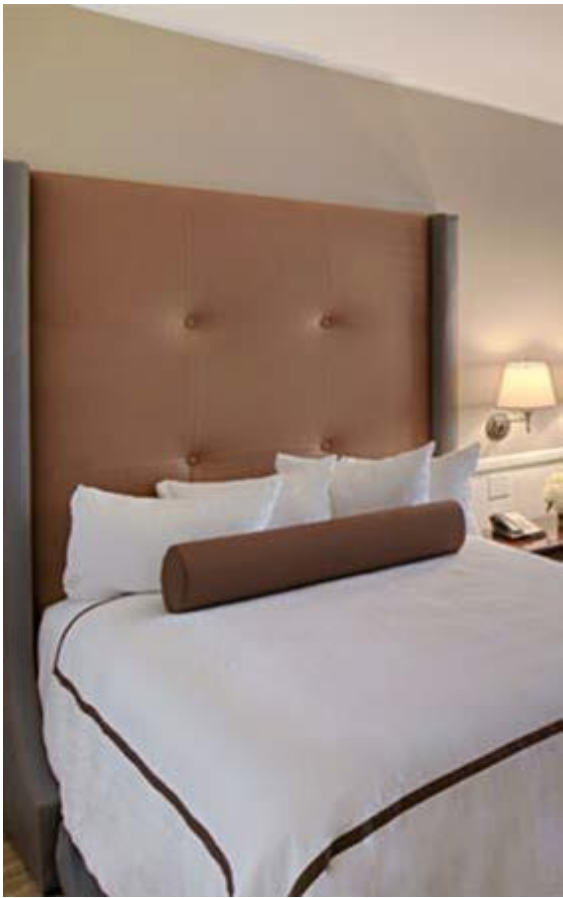
PHIPPS

at-a-glance



THE ROW

The Row NYC hotel has pioneered an era of individuality by meeting NYC's signature urban grit with grandeur- transforming your stay into a completely contemporary experience – with a front row view of Times Square that is truly incomparable. The Row NYC holds the superior locale of the Milford hotel and plenty more. With NYC art and culinary treasures at every corner, our guests undeniably reside in the middle of it all, with access to everything and anything – 24/7.



GARDEN CITY

Located on Long Island New York, this world class luxury hotel dates back to 1874. Keeping this theme in mind, creating a perfect blend between classic French design and modern comfort. Just a short distance away from New York City, the Garden City Hotel is the perfect weekend get-away for anyone looking to wind down from the grips of the city.



THE PAUL

Paul is a nomad who has settled his roots in the best neighborhood with others like him, the NoMad District of New York City. His dreams of travel and seeing the world have lead him to the exact spot where your dreams have lead you. He chose to settle in an area of New York as cultivated and impressed by culture, as he himself.



WYNDHAM TRYP

Located in the heart of Midtown Manhattan at 345 West 35th Street; between 8th and 9th Avenues, The TRYP by Wyndham Times Square South is centrally located. The hotel's décor is a whimsical blend featuring our Mediterranean origins and New York City chic with some of the largest rooms found in NYC (up to 455 square feet) accommodating up to 8 persons with 10 foot ceilings, reclaimed wood floors and fantastic New York City views.



50 NORTH 5th ST.

NEW YORK, NEW YORK

Consider the standards you have known for city living eclipsed. The ultimate lifestyle meets the ultimate destination. Introducing 50 North 5th. Williamsburg, Brooklyn's newest rental residence and NYC's poshest new address. With over 15,000 square feet of amenity space, you can experience everything from a two-level fitness center with indoor basketball court to a lush courtyard with bocce ball to the ultimate rooftop experience.

PROJECT ENGAGEMENT

Custom Design And Manufacturing of Medicine Cabinets and Architectural Stainless Steel Sinks.

Developer: White Diamond LLC





280 MET

WILLIAMSBURG, NEW YORK

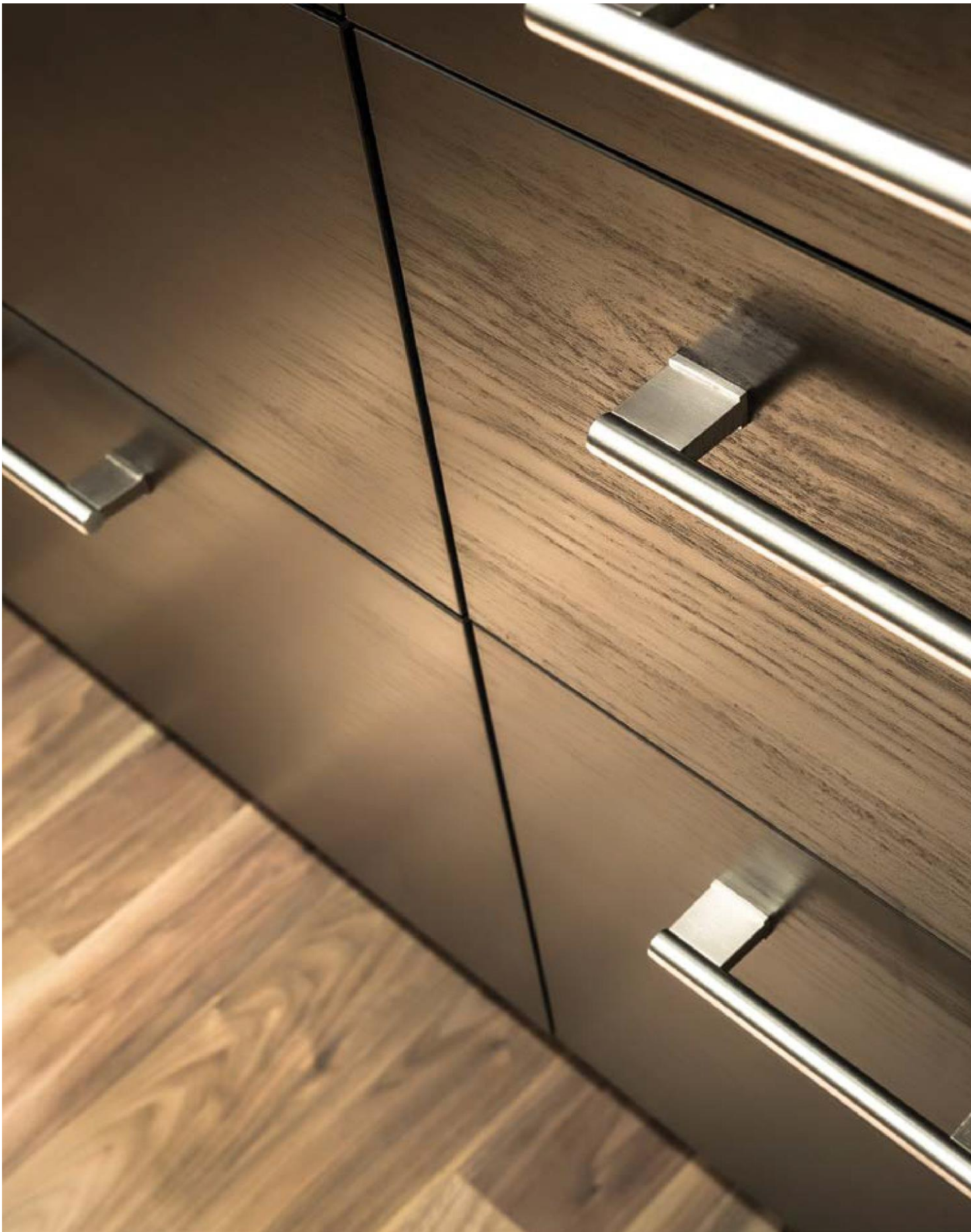
280 Metropolitan is a striking boutique condominium offering a collection of 28 refined residences (studios to three beds) in prime Williamsburg. Immaculate layouts, Enormous windows, Select-grade American walnut hardwood floors, Central heating and air conditioning.

PROJECT ENGAGEMENT

Custom Design and Manufacturing of Interior Bathrooms and Medicine Cabinets.

Developer: CM & Associates





I

PHIPPS
at-a-glance



465 PACIFIC

Amidst the beautiful brownstones of historic Boerum Hill, 465 Pacific Street is a limited collection of thirty condominium residences designed by acclaimed architect Morris Adjmi. Known for his contextual yet contemporary interpretations of historic architecture, Adjmi's design combines traditional elements of warmth and comfort with the benefits of a modern residential experience. Offering a range of one- to five-bedroom homes, many with private outdoor space,



205 EAST 92nd ST

With its oversized floor to ceiling windows and its incomparable views of Central park and the Hudson river, The Easton is the epitome of luxurious living in New York City. All 182 units feature oversized marble showers and double vanities, custom oak cabinetry and bronze hardware in the bathrooms. With its intricately designed custom finishes, smart in home automation and over 20,000 square feet of amenities The Easton offers a level of living that is unrivaled.



456 WASHINGTON ST

Introducing 456 Washington St, a limited number of thoughtfully designed homes perfectly positioned in the northwest corner of Tribeca. Nestled along the waterfront with unobstructed Hudson River views, this unique property combines the beloved character of the area's industrial past with large, light-filled modern residences and a tailored collection of amenities by David Rockwell.





35 XV

NEW YORK, NEW YORK

Boasting an incomparable panoramic view, 35 W. 15 street offers a mesmerizing view of New York City unlike any other. Its clean contemporary design perfectly complements the sleek geometric architecture of its unique design combining the best craftsmanship and material selection, from marble countertops to high-end flooring. Designed by FXFowle Architects, 35XV was named the winner of the 2015 Gold Award of Excellence, awarded by the Society of American Registered Architects New York Council

PROJECT ENGAGEMENT

Flooring, Stone, Marble -Tile, Backsplash, Countertops, Islands, Mosaics, Tub Decks, Saddles, Vanities, Custom Design and Manufacturing of Millwork.

Developer: Alchemy Properties





32 CUSTOM HOUSE

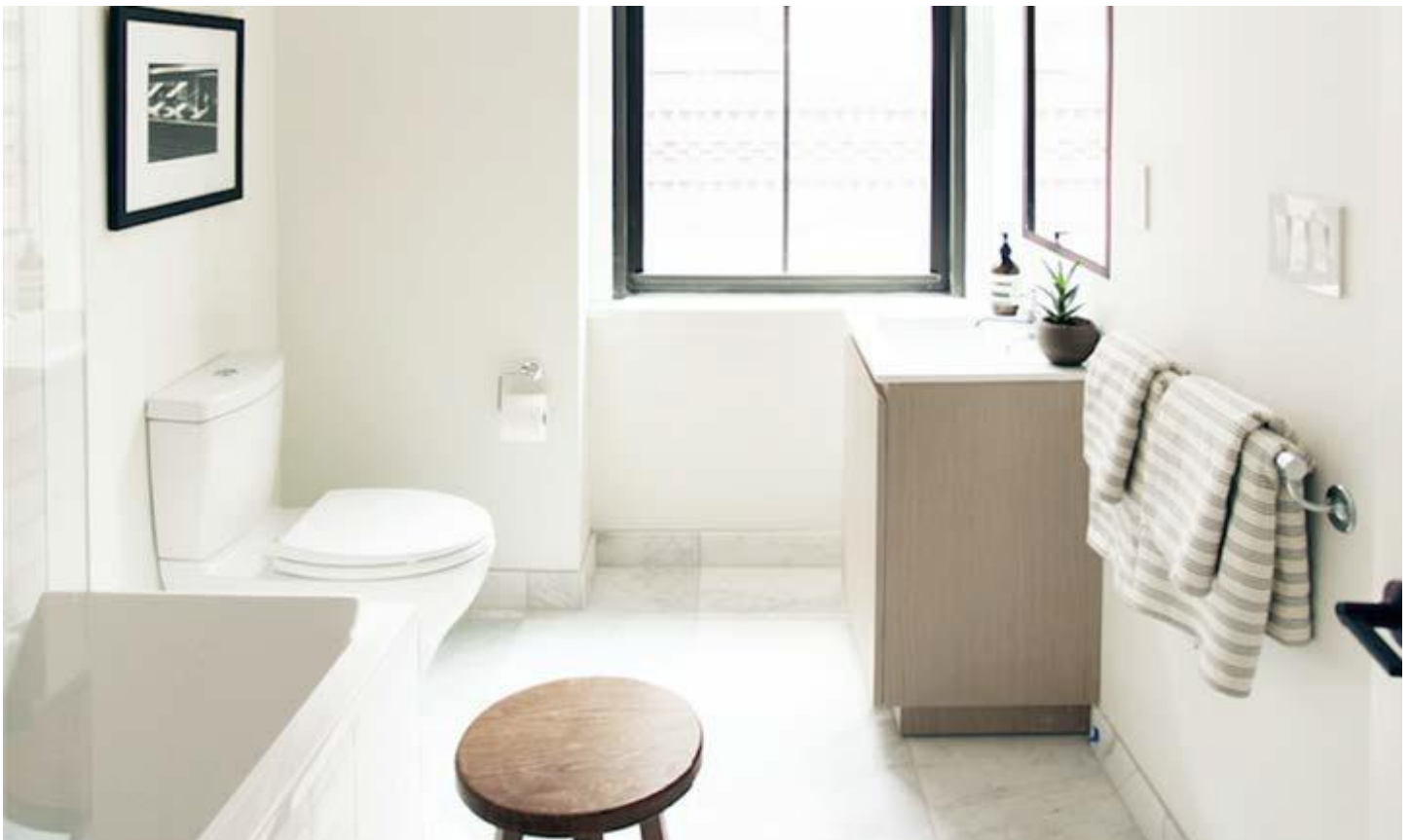
PROVIDENCE, RHODE ISLAND

Built in 1875 this building is a landmark of the Custom House District. 32 custom house offers the perfect blend of contemporary styling and modern day accessories. Clean, modern, and efficient; These residencies offer a warm cozy feeling that you don't get with most city dwellings. Located in the heart of downtown Providence, 32 Custom House is a stone's throw away from everything providence has to offer.

PROJECT ENGAGEMENT

Stone, Countertops, Kitchen Cabinets, Medicine Cabinets, Vanities, Architectural Stainless Steel Sinks, Basins. Bathroom Accessories.

Developer: ASH NYC





175 KENT AVENUE

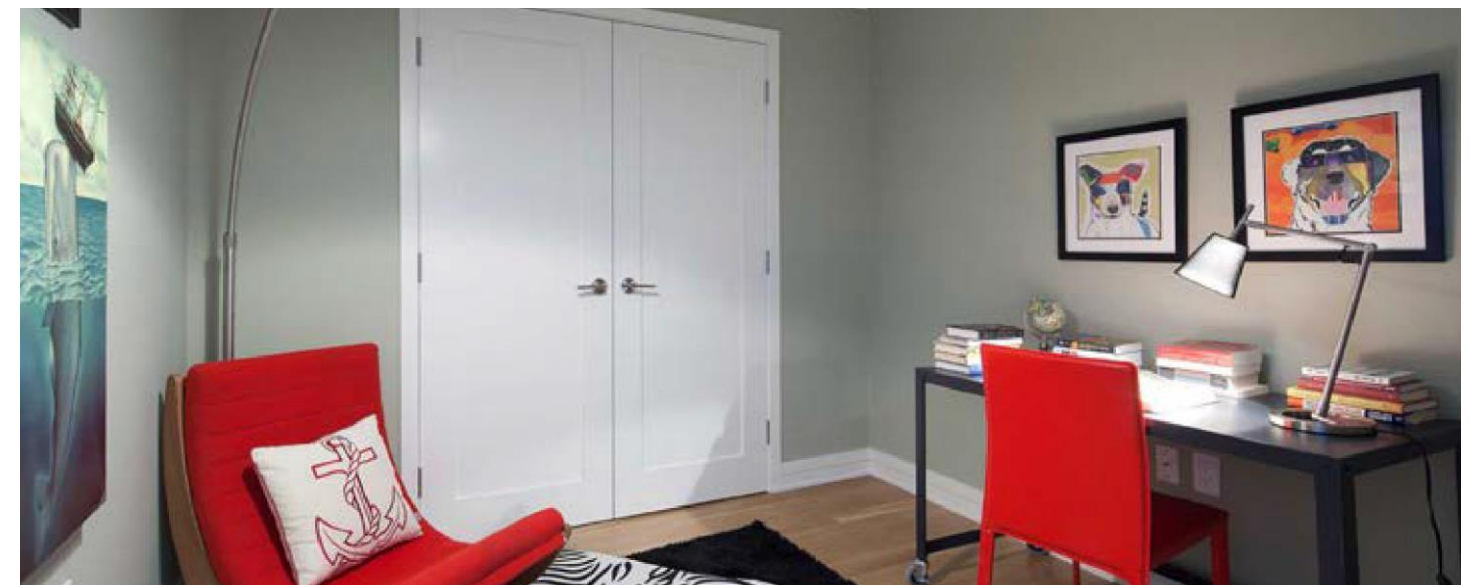
WILLIAMSBURG, NEW YORK

175 Kent Avenue in Brooklyn offers all of the luxury and amenities found in a Manhattan high-rise at a fraction of the cost. With oversized windows and its immaculate water front view. Sporting stainless steel stoves and appliances, custom designed cabinetry, and these modern apartments might just be the perfect combination of comfort and style.

PROJECT ENGAGEMENT

Custom Design and Manufacturing of Shower Enclosures and Bathroom Accessories.

Developer: The Chetrit Group





71 READE + CHAMBERS

NEW YORK, NEW YORK

Selldorf Architects and Seventeen Interiors transform the loft aesthetic, achieving an elegance defined by clarity of vision, precise material selection, and a decisive handling of detail. With façades on both reade and chambers streets, the intimately scaled building is united by a landscaped interior courtyard, with an entrance framed in cast iron.

PROJECT ENGAGEMENT

Custom Design and Manufacturing of Vanities and Medicine Cabinets.

Developer: CM & Associates





SLATE BUILDING

NEW YORK, NEW YORK

Designed by Karl Fischer himself, this beautiful building is home to one of the hottest residences in Chelsea. Pulling from its rich heritage, the Slate residency employs a classic vibe with modern amenities. The 165 West 18th Street building (aka Slate Condominiums) is located in Chelsea between Sixth Avenue and Seventh Avenue. This 12-story elevator building has 29 residential units and was built in 2007.

PROJECT ENGAGEMENT

Flooring, Stone, Kitchen Cabinets, Countertops, Tile, Vanities, Sinks, Faucets.

Developer: Slate Building Group





R

FLATS CHICAGO

CHICAGO, ILLINOIS

At its heart, Flats Chicago is a community of micro dwelling units. Spread across the suburbs of Chicago; Flats is on the forefront of modern space conscious living.

Multi Location Project - 6 locations done in Chicago

PROJECT ENGAGEMENT

Stone & Tile, Flooring, Architectural Sinks and Basins.

Developer: Method Construction





340 COURT STREET

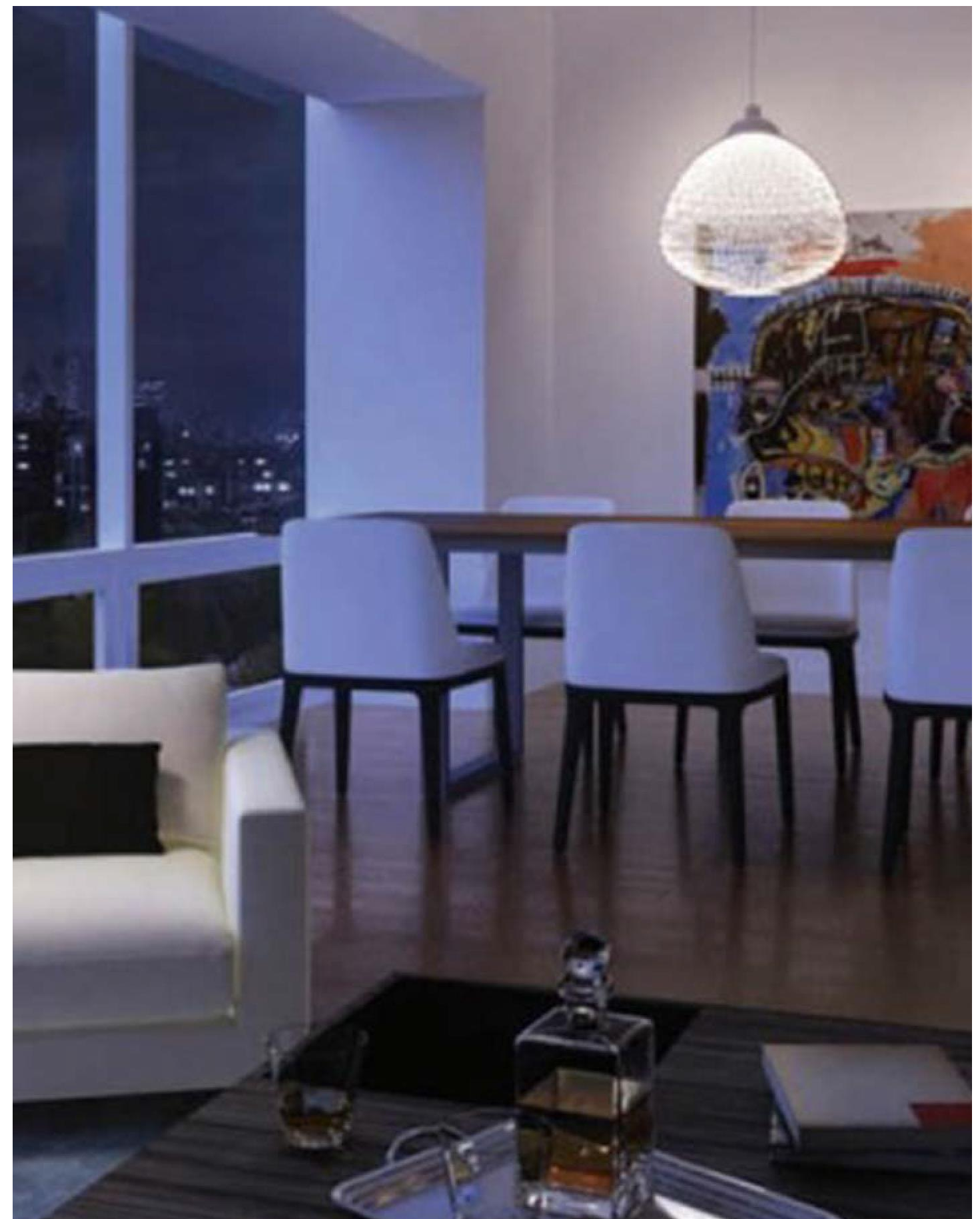
NEW YORK, NEW YORK

This collection of town homes located on Sackett and Union Street offer modern town home living in a historic setting. With private parking, roof deck, patio and a backyard these modern day town homes will make you feel like your living anywhere but New York City.

PROJECT ENGAGEMENT

Custom Design and Manufacturing of Flooring.

Developer: Alchemy Properties





THE CASTLE

PORT CHESTER, NEW YORK

A brand new apartment community where the fairytale of stress-free living an hour from Manhattan, becomes a reality. Take in the sunset from the rooftop deck or unwind in many of the posh lounge spaces. Located in downtown Port Chester, the neighborhood offers just about any type of cuisine, shopping or nightlife your heart desires. Work in NYC? Not a problem. Castle is located right next to Port Chester station, where you can be in the heart of the Big Apple in less than an hour.

PROJECT ENGAGEMENT

Granite Countertops.

Developer: Racanelli Construction



LAFAYETTE ESTATES

BRONX, NEW YORK

When you decide to call Lafayette Estates home, you will encounter first hand that most elusive of concepts: true peace of mind. Surrounded by lush parkland in the Soundview section of the Bronx, it is just 10 minutes by car from the Bronx-Manhattan-Queens bridges. Lafayette Estates takes its name from the famed French Marquis, and its four residential towers are named after quaint French towns.



LIVMOR 115th ST

NEW YORK

Burgeoning Hudson Square marks the intersection of SoHo, West Village and Tribeca Renwick Street is the unique enclave at its heart. Brand-new Renwick Modern is a limited-edition property comprising of only 17 residences with high design by the legendary Philip Johnson Alan Ritchie Architects.



YORKSHIRE TOWERS

NEW YORK

Yorkshire towers is a commanding 21 story Post War Luxury High Rise. It was built in 1964 and contains 695 residences total. Being Located on the corner of east 86th Street and Second Avenue, puts Yorkshire Towers just steps away from Central Park, in the heart of the Upper East Side. Residences range from studios to 3 bedroom apartments. Every layout boasts over- sized living spaces, large windows throughout including windowed kitchens and baths, and an abundance of closet space.

PROJECT ENGAGEMENT

Custom Design and Manufacturing of Decorative Lighting.

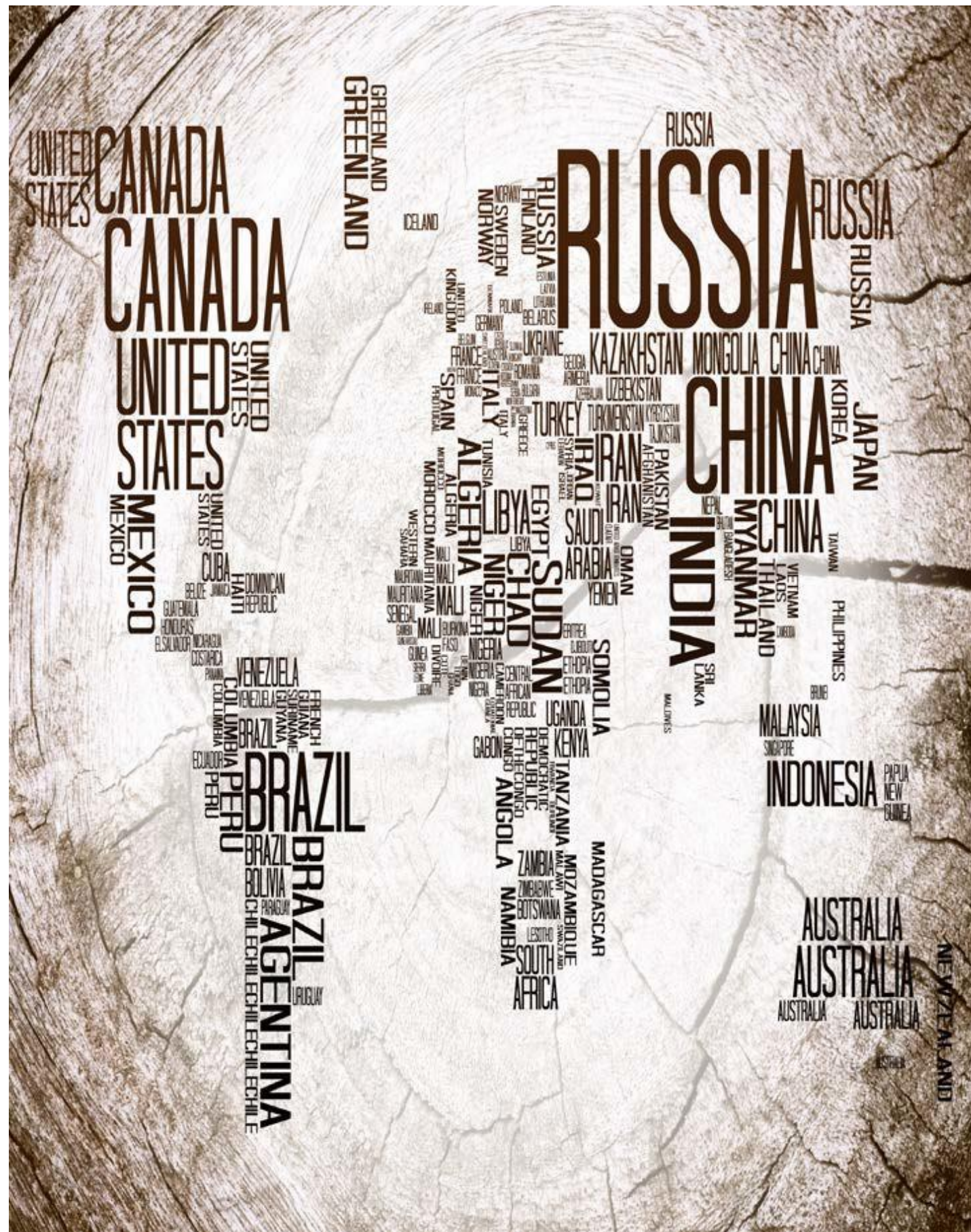
Developer: Upper East Side Management



WE WORK

NEW YORK / SEATTLE / SAN FRANCISCO / LONDON

Developer: We Work



PHIPPS CONTINUED ...

The Standard Hotels, US
 John Street Hotel, NY
 Sheraton Hotel, NC
 The Broadway Hotel, NY
 Indigo Hotel, NY
 Z Hotel, NY
 Orchard Street Hotel, NY
 The Ritz Carlton Hotel, NY
 Syracuse Hotel, NY
 Holiday Inn, LA
 Holiday Inn, 31st Street, NY
 Comfort Suites Hotel, NY
 Marriott Center Hotel, CA
 190 South 1st Street, NY
 Graybarn (Phase 1), NY
 22 River Terrace, NY
 336 Himrod Street, NY
 Hudson Yards, NY
 29-10 Broadway, NY
 70 Vestry, NY
 225 East 39th Street, NY
 Zara Apartments, NY
 227 Church Street, NY
 27 Albany Avenue, NY
 City Point, NY
 Homewood Suites, NY

520 30th Street, NY
 The Renny, NY
 Fulton Street, NY
 Moxy 7th Av, NY
 522 Lefferts Avenue, NY
 Mantena 431 W 37th Street, NY
 Meadowood at Gateway, NY
 123 3rd Avenue, NY
 Jennings Street, NY
 Southern Boulevard, NY
 St. Ann's, NY
 433 3rd Avenue, NY
 Barry Street, NY
 522 Lefferts Avenue, NY
 870 Jennings Street, NY
 22 Renwick Street, NY
 115th Street, NY
 3322 Decatur Street, NY
 Cooper Square, NY
 303 10th Avenue, NY
 131 Beverly, MA
 Celadon, NC
 Cast Iron Lofts, NJ
 East Market, PA
 Edge Water, NJ



969 3rd Avenue, 3rd Floor, Suite 1A,
New York, New York, 10022 P. 212-715-9100
info@phippсандco.com